

**NORTHWEST PIPE FITTINGS, INC
OF SCOTTSBLUFF, NE**

POLY PIPE



COMPUTER #	DESCRIPTION	
	IRON PIPE SIZE PURECORE	
162-0190	1/2"X100' 100# IPS PURECORE	
162-0212	3/4"X100' 100# IPS PURECORE	
162-0254	3/4"X400' 100# IPS PURECORE	
162-0288	1"X100' 100# IPS PURECORE	
162-0318	1"X300' 100# IPS PURECORE	
162-0350	1 1/4"X100' 100# IPS PURECORE	
162-0384	1 1/4"X300' 100# IPS PURECORE	
162-0392	1 1/2"X100' 100# IPS PURECORE	
	3408 100# SIDR 15 POLY PIPE	
162-0972	1/2"X100' 100# 3408 POLY	
162-1004	1/2"X400' 100# 3408 POLY	
162-1038	3/4"X100' 100# 3408 POLY	
162-1062	3/4"X400' 100# 3408 POLY	
162-1100	1"X100' 100# 3408 POLY	
162-1126	1"X300' 100# 3408 POLY	
162-1142	1 1/4"X100' 100# 3408 POLY	
162-1168	1 1/4"X300' 100# 3408 POLY	
162-1184	1 1/2"X100' 100# 3408 POLY	
162-1214	1 1/2"x250' 100# 3408 POLY	
162-1230	2"x100' 100# 3408 POLY PIPE	
162-1248	2"x200' 100# 3408 POLY PIPE	



CenFlo HDPE

HDPE 3408/3608 — ASTM D2239 and ASTM D2737 CTS

- Flexible polyethylene pipe and tubing
- Produced from only the finest virgin material
- Backed by a **30-YEAR WARRANTY**
- Virgin Black material

ASTM D2239			1/2"	3/4"	1"	1-1/4"	1-1/2"	2"
100 PSI	SIDR 15	O.D.	N/A	.944"	1.189"	1.564"	1.824"	2.343"
		I.D.	N/A	.824"	1.049"	1.380"	1.610"	2.067"
		Wall	N/A	.060"	.070"	.092"	.107"	.138"
		Wt/Ft	N/A	.074#	.109#	.187#	.251#	.416#
		Coil Lengths	N/A	100-400 ft.	100-300 ft.	100-300 ft.	100-250 ft.	100-200 ft.

MATERIAL: All CenFlo HDPE is manufactured from virgin high density polyethylene resin with the cell classification of 345464C per ASTM D 2239 or ASTM D 2737. The material contains a minimum 2% Carbon Black as a UV inhibitor to accommodate outside storage.

CERTIFICATION: Centennial Plastics certifies that CenFlo polyethylene pipe meet the specifications and requirements stated here.

All Centennial Plastics' products are manufactured in Hastings, Nebraska, USA



**NORTHWEST PIPE FITTINGS, INC
OF SCOTTSBLUFF, NE**



MODULAR CONTROLLERS

COMPUTER #	DESCRIPTION
552-1102	ESP4MI INDOOR MODULAR CONTROLLER
552-1108	ESP4M OUTDOOR MODULAR CONTROLLER
552-1114	ESPSM3 3STATION MODULE F/ESP CONTROLLER



CONTROL VALVES

COMPUTER #	DESCRIPTION
552-2448	75DV 3/4" CONTROL VALVE
552-2452	100DV 1" CONTROL VALVE
552-1972	100DVMB 1" MIPxINSERT CONTROL VALVE
552-1990	100DVF 1" VALVE W/FLOW CONTROL
552-2454	100DVA 1" ANGLE CONTROL VALVE
552-1992	100DVFA 1" ANGLE VALVE W/FLOW CONTROL
552-2022	100PGA 1" CONTROL VALVE
552-2030	150PEB 1 1/2" CONTROL VALVE
552-2032	150PGA 1 1/2" CONTROL VALVE W/FILTER
552-2036	200PGA 2" CONTROL VALVE W/FILTER
552-2120	200PEB 2" CONTROL VALVE



QUICK COUPLING VALVES

COMPUTER #	DESCRIPTION
5522830	3RC 3/4 INLET Q-C VALVE
5522908	33DK VALVE KEY
5522924	44K VALVE KEY
5522926	44RC QUICK OPENING VALVE



ROTARY HEAD

COMPUTER #	DESCRIPTION
552-3920	3504PC PART CIRCLE ROTARY HEAD
552-3960	5004 FC FULL CIRCLE ROTARY HEAD
552-3962	5004 PC PART CIRCLE ROTARY HEAD
552-3968	5004 PLUS PC HEAD



1800 SERIES POP-UP SPRAY HEADS

COMPUTER #	DESCRIPTION
552-4650	1802 2" POP-UP SPRAY HEAD
552-4651	1803 3" POP-UP SPRAY HEAD
552-4652	1804 4" POP-UP SPRAY HEAD
552-4654	1806 6" POP-UP SPRAY HEAD
552-4658	1812 12" POP-UP SPRAY HEAD



IMPACT HEADS

COMPUTER #	DESCRIPTION
552-3424	2045A MAXI PAW PC/FC IMPACT HEAD



prices subject to change without notice

**NORTHWEST PIPE FITTINGS, INC
OF SCOTTSBLUFF, NE**



SPRAY NOZZLES FOR 1800

COMPUTER #	DESCRIPTION	
552-4270	10F NOZZLE	
552-4274	10H NOZZLE	
552-4278	10Q NOZZLE	
552-4280	10 VAN NOZZLE	

552-4290	12F NOZZLE	
552-4294	12H NOZZLE	
552-4298	12Q NOZZLE	
552-4302	12T NOZZLE	
552-4307	12 VAN NOZZLE	

552-4320	15CST NOZZLE	
552-4324	15EST NOZZLE	
55-24328	15F NOZZLE	
552-4332	15H NOZZLE	
552-4344	15SST NOZZLE	
552-4348	15T NOZZLE	
552-4352	15TQ NOZZLE	
552-4360	15 VAN NOZZLE	



SWING PIPE AND FITTINGS

COMPUTER #	DESCRIPTION	
552-0300	SPXFLEX 1/2"x100' FUNNY PIPE	
552-0250	SBA050 1/2"MIPx1/2"INSERT FUNNY PIPE ADAPT	
552-0252	SBA075 3/4"MIPx1/2"INSERT FUNNY PIPE ADAPT	
552-0260	SBE050 1/2"MIPx1/2"INSERT FUNNY PIPE 90°	
552-0262	SBE075 3/4"MIPx1/2"INSERT FUNNY PIPE 90°	
552-0270	SBFE050 1/2"FIPx1/2"INSERT FUNNY PIPE ADAPT	
552-0284	SBCPLG 1/2" INSERT FUNNY PIPE COUPLING	
552-0286	SBTEE 1/2" INSERT FUNNY PIPE TEE	
552-0350	1429-129 1"x3/4" INSERTxFUNNY PIPE ADAPT	



DRIP IRRIGATION PIPE AND FITTINGS

COMPUTER #	DESCRIPTION	
552-8188	XT700100 100' DRIP TUBE	
552-8189	XT700500 500' DRIP TUBE	
552-8252	XFD-09-12-500 12" SPACING INLINE EMITER TUBE	
552-8254	XFD-09-12-100 12" SPACING INLINE EMITER TUBE	
552-8258	XFD-09-18-100 18" SPACING INLINE EMITER TUBE	
552-8260	XFD-09-18-500 18" SPACING INLINE EMITER TUBE	
552-0360	MDCFTEE 1/2" EASY FIT MULTI COMP. TEE	
552-0362	MDCF COUP 1/2" EASY FIT COMP. COUPLING	
552-0364	MDCFEL 1/2" EASY FIT COMP. 90 ELL	
552-0366	MDCF50MPT 1/2" EASY FIT COMP. MIP ADAPT	
552-0369	MDCF50FPT 1/2" EASY FIT COMP. FIP ADAPT	
552-0378	MDCF CAP 1/2" EASY FIT REMOVABLE FLUSHER	

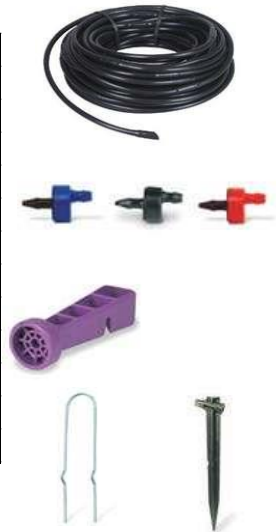


**NORTHWEST PIPE FITTINGS, INC
OF SCOTTSBLUFF, NE**



DRIP IRRIGATION PIPE AND FITTINGS CONT.

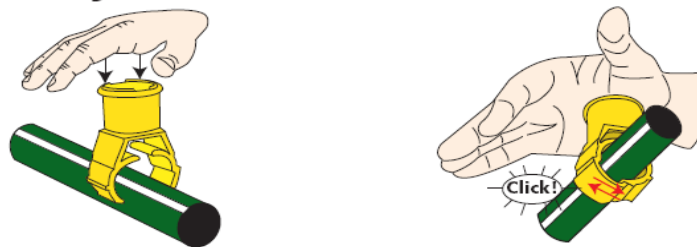
COMPUTER #	DESCRIPTION	
552-8049	XQ-100 1/4"x100' DISTRIBUTION TUBE	
552-8050	XQ-1000 1/4"x1000' DISTRUBUTION TUBE	
552-8090	EMAGPX GOOF PLUG	
552-8096	XB05 .05GPH EMITTER	
552-8100	XB10 1.0GPH EMITTER	
552-8104	XB20 2.0GPH EMITTER	
552-8500	DBC025 BUG CAP	
552-8400	XMTOOL XERIMAN TOOL	
552-8205	PRF-075-RBY 3/4" PRESURE REGULATED WYE	
552-8201	PRF-100-RBY 1" PRESURE REGULATED WYE	
552-8220	TDSO50BEND WIRE TIEDOWN STAKE	
552-8550	TS025 TUBING STAKE	



COMPUTER #	DESCRIPTION	
550-3400	LV9000 WIRE CONNECTORS	
550-5550	BS7000 1"x1/2" SELF TAPPING SADDLE	
550-5560	BS8000 1"x3/4" SELF TAPPING SADDLE	
550-5910	HP1600 1"x1/2" INSTxFIP DRAIN 90 ELL	
550-5920	HP1700 1"x3/4" INSTxFIP DRAIN 90 ELL	
550-5930	HP2000 1/2" DRAIN (YELLOW)	
550-5940	HP3000 3/4" DRAIN (YELLOW)	
550-5950	HP4000 1/2" MAIN LINE DRAIN (RED)	



Easy to Install. Just Push Down!



COMPUTER #	DESCRIPTION	
094-4020	MA0101-010 1" SWVxMIPxSWV MANIFOLD TEE	
094-4022	MA0602-010 1" SWVxMIP MANIFOLD 90 ELL	
094-0112	491060 1/2"x6" CUT-OFF NIPPLE	
094-0400	492060 1/2"x3/4"x6" CUT-OFF NIPPLE	
094-0402	493060 3/4"x6" CUT-OFF NIPPLE	



**NORTHWEST PIPE FITTINGS, INC
OF SCOTTSBLUFF, NE**



COMPUTER #	DESCRIPTION	
551-2856	75C 3/4"x1/2" PVC SADDLE	
551-2860	75D 3/4"x3/4" PVC SADDLE	
551-7805	100C 1"x1/2" PVC SADDLE	
551-7808	100D 1"x3/4" PVC SADDLE	
430-1114	T135-0 KWIK CUT PIPE CUTTER	
430-1117	BT135 REPLACE BLADE F/T135 CUT	
094-2520	H8CT 1/2"-3/4" COMBO CORING TOOL	
094-2700	ND375 9/16" NUT DRIVER	
552-6550	CT112 12" PINCH TOOL	



COMPUTER #	DESCRIPTION	
5514390	75AV 3/4" BRASS MANUAL ANGLE VALVE	
5514392	100AV 1" BRASS MANUAL ANGLE VALVE	
5514394	125AV 1 1/4" BRASS MANUAL ANGLE VALVE	
5514396	150AV 1 1/2" BRASS MANUAL ANGLE VALVE	
5514398	200AV 2" BRASS MANUAL ANGLE VALVE	
5515004	30CVK 30" VALVE KEY	



COMPUTER #	DESCRIPTION	
186-1686	809-09 7" ROUND VALVE BOX	
186-1926	910-10 10" ROUND VALVE BOX	
186-2280	1419-06 6" DEEP STD VALVE BOX	
186-2402	1419-12 12" STD VALVE BOX	
186-2615	1220-06 6" DEEP JUMBO VALVE BOX	
186-2600	1220-12 12" JUMBO VALVE BOX	
	LIDS	
186-1690	809-T 7" ROUND LID ONLY	
186-2560	910 10" VALVE BOX LID ONLY (GREEN)	
186-2284	1419-T STD VALVE BOX LID ONLY (GREEN)	
186-0000	1220-T JUMBO LID ONLY (GREEN)	
	EXTENTIONS	
186-2524	1419-6X STD VALVE BOX EXTENTION	
186-2610	1220-6X JUMBO BOX EXTENTION	



**NORTHWEST PIPE FITTINGS, INC
OF SCOTTSBLUFF, NE**



18 GUAGE SPRINKLER WIRE

COMPUTER #	DESCRIPTION	
527-2920	18/3 X 250' SPRINKLER WIRE	
527-2928	18/5 X 250' SPRINKLER WIRE	
527-2936	18/6 X 250' SPRILKLER WIRE	
527-2942	18/7 X 250' SPRINKLER WIRE	
527-2952	18/8 X 250' SPRINKLER WIRE	
527-2970	18/10 X 250' SPRINKLER WIRE	
527-3000	18/13 X 250' SPRINKLER WIRE	



PUMP START RELAY

551-8400	PSR123-24 PUMP START RELAY	
----------	----------------------------	--



CLAMPS

COMPUTER #	DESCRIPTION	
	IDEAL STAINLESS STEEL GEAR CLAMPS	
164-0026	6812 1/2"x3/4" SS CLAMP	
164-0050	6820 1"x11/4" SS CLAMP	
164-0068	6828 1 1/2" SS CLAMP	
164-0076	6836 2" SS CLAMP	
164-0078	6856 3" SS CLAMP	
164-0080	6888 4" SS CLAMP	
164-0084	6832 1 1/2"x2" SS CLAMP	
164-0114	6932 1/2"-2" SS LOX-ON CLAMP	
	OETIKER PINCH CLAMPS	
552-6495	210-R 1/2" OETIKER CLAMP	
552-6500	271-R 3/4" OETIKER CLAMP	
552-6510	331-R 1" OETIKER CLAMP	
552-6520	410-R 1 1/4" OETIKER CLAMP	



NORTHWEST PIPE FITTINGS, INC OF SCOTTSBLUFF, NE

POLY PIPE FRICTION LOSS CHART

psi Loss per 100 Feet of Pipe (psi/100 ft.)

Sizes 1/2" through 6" Flow 1 through 600 gpm

Size I.D.	1/2" 0.622		3/4" 0.824		1" 1.049		1 1/4" 1.380		1 1/2" 1.610		2" 2.067	
Flow gpm	Velocity fps	psi Loss	Velocity fps	psi Loss	Velocity fps	psi Loss	Velocity fps	psi Loss	Velocity fps	psi Loss	Velocity fps	psi Loss
1	1.06	0.43	0.60	0.11	0.37	0.03	0.21	0.01	0.16	0.00	0.10	0.00
2	2.11	1.55	1.20	0.39	0.74	0.12	0.43	0.03	0.32	0.02	0.19	0.00
3	3.17	3.28	1.80	0.83	1.11	0.26	0.64	0.07	0.47	0.03	0.29	0.01
4	4.22	5.58	2.41	1.42	1.48	0.44	0.86	0.12	0.63	0.05	0.38	0.02
5	5.28	8.43	3.01	2.15	1.86	0.66	1.07	0.17	0.79	0.08	0.48	0.02
6	6.34	11.81	3.61	3.01	2.23	0.93	1.29	0.24	0.95	0.12	0.57	0.03
7	7.39	15.71	4.21	4.00	2.60	1.24	1.50	0.33	1.10	0.15	0.67	0.05
8	8.45	20.12	4.81	5.12	2.97	1.58	1.72	0.42	1.26	0.20	0.76	0.06
9	9.50	25.01	5.41	6.37	3.34	1.97	1.93	0.52	1.42	0.24	0.86	0.07
10	10.56	30.40	6.02	7.74	3.71	2.39	2.15	0.63	1.58	0.30	0.96	0.09
11	11.61	36.26	6.62	9.23	4.08	2.85	2.36	0.75	1.73	0.35	1.05	0.11
12	12.67	42.59	7.22	10.84	4.45	3.35	2.57	0.88	1.89	0.42	1.15	0.12
14	14.78	56.64	8.42	14.42	5.20	4.45	3.00	1.17	2.21	0.55	1.34	0.16
16	16.89	72.52	9.63	18.46	5.94	5.70	3.43	1.50	2.52	0.71	1.53	0.21
18	19.01	90.17	10.83	22.95	6.68	7.09	3.86	1.87	2.84	0.88	1.72	0.26
20			12.03	27.89	7.42	8.62	4.29	2.27	3.15	1.07	1.91	0.32
22			13.24	33.27	8.17	10.28	4.72	2.71	3.47	1.28	2.10	0.38
24			14.44	39.08	8.91	12.07	5.15	3.18	3.78	1.50	2.29	0.45
26			15.64	45.32	9.65	14.00	5.58	3.69	4.10	1.74	2.49	0.52
28			16.85	51.98	10.39	16.06	6.01	4.23	4.41	2.00	2.68	0.59
30			18.05	59.05	11.14	18.24	6.44	4.80	4.73	2.27	2.87	0.67
35					12.99	24.26	7.51	6.39	5.52	3.02	3.35	0.89
40					14.85	31.06	8.58	8.18	6.30	3.86	3.82	1.15
45					16.71	38.62	9.65	10.17	7.09	4.80	4.30	1.42
50					18.56	46.94	10.73	12.36	7.88	5.84	4.78	1.73



Rain Bird is a proud EPA WaterSense Partner.

What is the WaterSense Label

The U.S. Environmental Protection Agency developed a WaterSense program to make it easier for consumers to:

- Recognize water saving products by labeling products that meet water conservation requirements.
- Gain access to new water saving innovations.
- Understand the value of water efficiency.
- Reduce strain on water resources.

Technical Support

Rain Bird Technical Support has the answers to your specific product and water-management questions. Call our toll-free Technical Service or Spec Hotline numbers, or for maximum convenience, access the Rain Bird web site. You'll get expert advice and the right solutions.

Technical Service	Spec Hotline	Internet Address
1-800-RAINBIRD (1-800-724-6247)	1-800-458-3005	www.rainbird.com